

Structure and Properties of New Reversibly Crosslinked iPP/LDPE Blends

S. Bouhelal,¹ M. E. Cagiao,² S. Khellaf,¹ D. Benachour,¹ F. J. Baltá Calleja²

¹LMPMP, Faculty of Engineering, Ferhat Abbas University, Sétif, Algeria

²Instituto de Estructura de la Materia, CSIC, Serrano 119, 28006 Madrid, Spain

Received 25 October 2007; accepted 25 November 2007

DOI 10.1002/app.28194

Published online 8 April 2008 in Wiley InterScience (www.interscience.wiley.com).

ABSTRACT: Reversibly crosslinked blends of isotactic polypropylene and low density polyethylene (iPP/LDPE) were prepared in the presence of crosslinking agents using reactive extrusion. The structure and properties of the modified blends were investigated by means of wide-angle X-ray scattering (WAXS), differential scanning calorimetry (DSC), and macro- and micro-mechanical measurements. The crystallinity of the modified samples (LDPE, iPP, and their blends) does not seem to be so much affected by the crosslinking process. Results show that the microhardness of the iPP/LDPE blends notably increases with the iPP content. The micromechanical properties of the modified

blends only improve slightly as a consequence of the crosslinking process. In the iPP samples, and also in the iPP/LDPE blends, this process gives rise to the appearance of new, crystalline ethylenic chains, as evidenced by the calorimetric measurements. Furthermore, the impact strength of the modified materials is improved as compared with that of the original ones, while some of the crosslinked blends show a ductile fracture behavior. © 2008 Wiley Periodicals, Inc. *J Appl Polym Sci* 109: 795–804, 2008

Key words: reactive extrusion; reversible crosslinking; microhardness of blends

INTRODUCTION

Polymer properties and applications are strongly affected by crosslinking. Crosslinked polymers are especially adequate for the preparation of high processability fibers, or blow molding films.¹ A particular example is crosslinked polyethylene (PE) very useful in the wire coating and in the preparation of materials capable of shrink under the action of heat.^{2,3} Crosslinked polyolefins can be obtained, either chemically, by means of an organic peroxide that can decompose, thus creating radicals that react with the polymer chains,^{2,4} either by direct irradiation of the polymer with a high energy radiation, i.e., electron beams,^{3,4} or by γ -rays.⁵ Both methods give rise to the formation of macroradicals capable to produce bonds between the chains by a recombination process.¹

While PE is a polymer easily crosslinked by the above cited methods,^{4,6} they fail off when applied to isotactic polypropylene (iPP). If iPP is either irradiated, or treated with a peroxide, the β -scission degradation process predominates over the crosslinking reaction.^{5,7} This is due to the low stability of the tertiary hydrogen atoms of the macroradicals.⁸ In fact,

the β -scission degradation originated by the peroxides has been applied to control the molecular weight and the molecular weight distribution in the iPP produced in industrial processes.^{9,10} For this reason, iPP has been considered, until the last decade or so, as a noncrosslinkable polymer. However, in recent years new methods have been developed that allow the preparation of crosslinked iPP.^{1,7}

In a previous study,¹¹ we reported a new method developed for the reversible crosslinking of iPP.¹² We investigated as well the properties of the modified materials obtained by using several crosslinking agents. This method is also susceptible to be applied to blends of iPP with high or low density PE, iPP copolymers, their blends with elastomers, etc.¹³ Moreover, the starting polymers do not need to be only freshly prepared, but can also be recycled, restored, etc.^{11–13} As polyolefins are among the polymers most used worldwide, the possibility of solving the problems related with their recovery and recycling is indeed very attractive.

Consequently, we have extended our reversible crosslinking method^{11–13} to low density polyethylene (LDPE) samples, and also, to several iPP/LDPE blends with different composition. The present article deals with the preparation and characterization of these reversibly crosslinked materials.

As it was indicated,¹¹ the materials to be used in the crosslinking process are: iPP and/or LDPE, an organic peroxide, sulfur S, an accelerator, and potassium persulfate. The “crosslinking agent” is consti-

Correspondence to: F. J. Baltá Calleja (embalta@iem.cfmac.csic.es).

Contract grant sponsor: MEC, Spain; contract grant number: FIS2004-01331.

tuted by the peroxide, sulfur, and the accelerator. All these materials have been mixed by extrusion. However, any other transformation process currently used in the thermoplastics industry can be used, as, for instance, blow, injection, or compression molding. Therefore, the modified polymers can be used to manufacture a number of articles.

The principle of the crosslinking reaction has been already explained.¹¹ Basically, it creates macroradicals at such a rate that they can act immediately on sulfur, before the termination reaction takes place. The crosslinking process is a chemical reaction of homolytic type. As a first step, the peroxide decomposition (initiation reaction) gives rise to the formation of macroradicals with a very short lifetime. Then, the sulfur atoms link the chains (coupling reaction) by forming a tridimensional network. The bridges linking the chains can be: single sulfur atoms, polysulfides, i.e., $-(S)_x-$, or even cyclic S-compounds. Accelerators increase the sulfur activation rate, in such a way that the macroradicals' creation and their coupling reaction with the sulfur take place simultaneously. Thus, it is possible to achieve an optimum crosslinking degree for each formulation. The potassium persulfate makes possible to regulate, in a more efficient way, the macroradicals' lifetime. More details concerning the experimental procedure are given in Refs. 12 and 13.

From the foregoing, it is clear that blend composition has to be adjusted taking into account the crosslinking degree to be obtained. This, in turn, is closely related to the radical peroxide efficiency, and its activation rate. For this reason, in every experiment it is necessary to take into consideration both the transformation temperature, and the specific characteristics of the extrusion equipment to be used.¹¹

The aims of the present work are two-fold:

1. the preparation of crosslinked iPP, LDPE, and their blends in different proportions.

2. to examine the influence of the crosslinking process in the structure and properties of the modified materials.

EXPERIMENTAL

Materials

The materials used in this investigation were the following:

iPP Sabic-Vestolen 9000-67404: supplied by Chemische Werke Hüls, Germany. LDPE B21 sak: supplied by ENIP, Skikda, Algeria.

Dicumyl peroxide (DCP) (96% activity): supplied by NORAX. Sulfur, (S) (vulcanizing agent for rubber): supplied by Wuxi Huasbeng Chemical Additives Factory, China. Potassium persulfate: supplied by Innochem, Belgium.

The three accelerators used were: Super accelerator 500" (tetramethyl thiuram monosulphide, TMTM); Super accelerator 501" (tetramethyl thiuram disulphide TMTD); and Quick accelerator 200" (mercaptobenzothiazole disulphide, MBTS). They were supplied by Rhône-Poulenc, France.

The peroxide, the sulfur, and the accelerators constitute the "crosslinking agents."

Blend preparation

For the preparation of the blends, the sulfur concentration was always equal to that of the peroxide. The amount of sulfur and peroxide was 0.2 or 0.4 wt %. In all cases, the accelerator was [1/4] of the sulfur and peroxide concentration. The composition of the samples discussed in the present study is indicated in Tables I and II.

The iPP and/or the LDPE samples, the crosslinking agent and potassium persulfate were first mixed

TABLE I
Composition of iPP and LDPE Samples

Sample	Polymer	Peroxide content (%)	Sulfur content (%)	Accelerator content (%)
iPP	iPP	–	–	–
1	iPP	0.2	0.2	0.05 (TMTM)
2	iPP	0.4	0.4	0.1 (TMTM)
3	iPP	0.2	0.2	0.05 (TMTD)
4	iPP	0.4	0.4	0.1 (TMTD)
5	iPP	0.2	0.2	0.05 (MBTS)
6	iPP	0.4	0.4	0.1 (MBTS)
LDPE	LDPE	–	–	–
X1	LDPE	0.2	0.2	0.05 (TMTM)
X2	LDPE	0.4	0.4	0.1 (TMTM)
X3	LDPE	0.2	0.2	0.05 (TMTD)
X4	LDPE	0.4	0.4	0.1 (TMTD)
X5	LDPE	0.2	0.2	0.05 (MBTS)
X6	LDPE	0.4	0.4	0.1 (MBTS)

TABLE II
Composition of iPP/LDPE Blends

Sample	Polymer	Peroxide content (%)	Sulfur content (%)	Accelerator content (%)
iPP/LDPE 30/70	iPP/LDPE 30/70	–	–	–
VI1	iPP/LDPE 30/70	0.2	0.2	0.05 (TMTM)
VI2	iPP/LDPE 30/70	0.4	0.4	0.1 (TMTM)
VI3	iPP/LDPE 30/70	0.2	0.2	0.05 (TMTD)
VI4	iPP/LDPE 30/70	0.4	0.4	0.1 (TMTD)
VI5	iPP/LDPE 30/70	0.2	0.2	0.05 (MBTS)
VI6	iPP/LDPE 30/70	0.4	0.4	0.1 (MBTS)
iPP/LDPE 50/50	iPP/LDPE 50/50	–	–	–
IIA	iPP/LDPE 50/50	0.2	0.2	0.05 (TMTM)
IIB	iPP/LDPE 50/50	0.4	0.4	0.1 (TMTM)
IIC	iPP/LDPE 50/50	0.2	0.2	0.05 (TMTD)
IID	iPP/LDPE 50/50	0.4	0.4	0.1 (TMTD)
IIE	iPP/LDPE 50/50	0.2	0.2	0.05 (MBTS)
IIF	iPP/LDPE 50/50	0.4	0.4	0.1 (MBTS)
iPP/LDPE 70/30	iPP/LDPE 70/30	–	–	–
IV1	iPP/LDPE 70/30	0.2	0.2	0.05 (TMTM)
IV2	iPP/LDPE 70/30	0.4	0.4	0.1 (TMTM)
IV3	iPP/LDPE 70/30	0.2	0.2	0.05 (TMTD)
IV4	iPP/LDPE 70/30	0.4	0.4	0.1 (TMTD)
IV5	iPP/LDPE 70/30	0.2	0.2	0.05 (MBTS)
IV6	iPP/LDPE 70/30	0.4	0.4	0.1 (MBTS)

in the solid state, using a small quantity of vegetal oil, to wet and improve the dispersion of the fine powder of the different components within the granules of, both, iPP and LDPE. Thereafter, the obtained mixture was inserted into a single screw laboratory extruder (Prolabo 1989) with the following characteristics: $L/D = 20$; screw diameter = 25 mm; screw speed = 60 turns/min. The residence time was about 3 min. The temperature profile used for the three stages was:

Feed zone = 155°C; compression zone = 180°C; homogenization zone = 200°C. Every extrusion cycle was repeated twice, to achieve a homogeneous blend.

Techniques

The samples were characterized by using wide-angle X-ray scattering (WAXS), differential scanning calorimetry (DSC), microhardness measurement, tensile stress–strain experiments, and impact strength tests.

The WAXS study was performed using a Seifert diffractometer (reflection mode). The working conditions were as follows: voltage: 40 kV; intensity: 35 mA; angular range: 5–30° (2θ); scan rate: 0.01°/s; slits: 0.3, 0.2. The crystallinity α_{rX} of every sample was calculated from the ratio of the area corresponding to the crystalline peaks to the total area of the diffractogram.

Thermal analysis was performed in a Perkin-Elmer differential scanning calorimeter DSC-4, in an inert N₂ atmosphere. The temperature range studied

was 45–220°C. The heating rate was 20°C/min. Typical sample weights were 5–10 mg. The crystallinity measured by calorimetry, α_{DSC} , was derived from the melting enthalpy obtained by DSC using the expression: $\alpha_{DSC} = \Delta H_m / \Delta H_m^{\infty}$; here, ΔH_m and ΔH_m^{∞} are the experimental melting enthalpy and the melting enthalpy for an infinitely thick crystal, respectively.

Microhardness H was measured at room temperature using a Leitz tester, adapted with a square-based diamond indenter.¹⁴ The H -value was derived from the residual projected area of indentation according to the expression: $H = kP/d^2$, where d is the length of the impression diagonal in meters, P the contact load applied in N and k is a geometrical factor equal to 1.854. Loads of 0.25, 0.5, and 1N were used. The loading cycle was 0.1 min. The H -value was derived from the average of 8–10 indentations.

Tensile stress–strain experiments were performed in dumb-bell samples prepared in a nonisotropic ASTM mold, according to the ASTM norm D 638. The crosshead speed used in the tensile experiments was 5 mm/min.

The impact strength test was carried out in a device equipped with a control of absorption energy. Specimens were prepared by compression molding. Notched (1/10 deep) specimens were tested by the Izod strength method. Measurements were carried at room temperature according to the ASTM D 180 norm., being the specimen thickness and width 3 and 9 mm, respectively. Resiliences a_k (J/m²) and energies of absorption (J) were obtained using a hammer of 7 J.

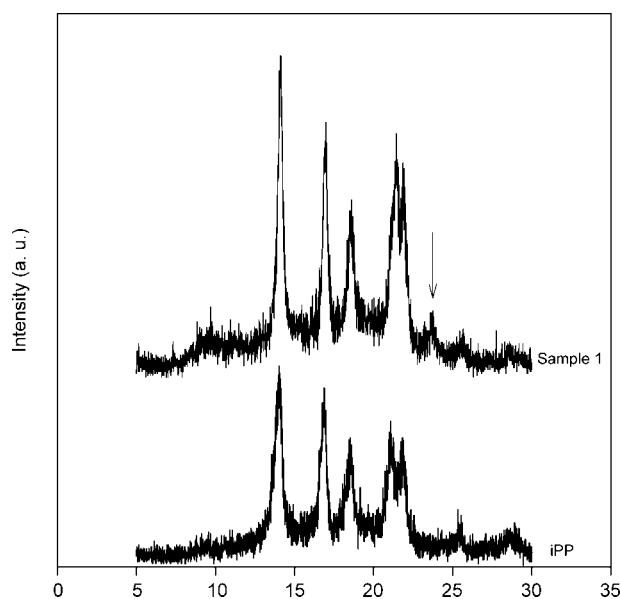


Figure 1 Diffractograms of iPP: original, and crosslinked sample 1. The composition is indicated in Table I.

RESULTS

Wide-angle X-ray diffraction

WAXS patterns taken on the LDPE samples before and after crosslinking, not shown here, are typical for the orthorhombic form of PE (see Fig. 3.3 in Ref. 15). In addition, the crystallinity α_{rX} values remain practically constant ($\alpha_{rX} = 0.36\text{--}0.40$). These results indicate that the crosslinking process does not affect the crystalline structure of the material.

We present here a brief summary of the behavior of the crosslinked iPP samples, previously described,¹¹ to compare their properties with those exhibited by the LDPE samples, and by the blends of both polymers, crosslinked by using the same agents.

The WAXS diagrams of all iPP samples are characteristic of the monoclinic α -form of iPP.¹⁶ Figure 1 shows the diffractograms of the pristine iPP and one

of the crosslinked iPP samples (the composition is shown in Table I). All the crosslinked samples have crystallinity values α_{rX} that are slightly lower than that of the nonmodified iPP (see Table III in Ref. 11). In addition, the WAXS patterns of the crosslinked iPP samples exhibit a new, small intensity reflection at about 23.8° (2θ)¹¹ (see Fig. 1). This reflection, indicated by an arrow, can be related to the (200) planes in PE.¹⁵ Moreover, the (111) reflection, appearing at about 21° (2θ) in the nonmodified iPP, is slightly shifted to higher angles, nearly coinciding with the (110) reflection of PE, at 21.55° (2θ).¹⁵ All the cross-linked iPP samples (not shown here for the sake of clarity) behave in the same way as sample 1. Their WAXS patterns only differ in the relative intensity of some diffraction peaks.

Figure 2 illustrates the WAXS patterns of the original and one of the crosslinked iPP/LDPE 50/50 blends (sample IIA, the composition is given in Table II). It can be seen that the diffractograms of the as-prepared and the crosslinked blend exhibit the characteristic reflections of, both, LDPE and iPP. The other crosslinked iPP/LDPE 50/50 blends (not shown here) look quite similar to the one depicted in Figure 2. Indeed, the crosslinking process seems mainly to affect the relative intensity of some reflections. The same behavior can be observed in the WAXS patterns of the crosslinked blends with compositions iPP/LDPE 30/70 and 70/30. It is interesting to note that, whereas the nonmodified blends iPP/LDPE 50/50 (see Fig. 2) and 70/30 exhibit a small reflection at 16.1° (2θ), characteristic of the β -form of the iPP, this reflection does not appear in the corresponding crosslinked blends.

On the other hand, the crystallinity values α_{rX} of the crosslinked material remain very close to that of the original iPP/LDPE 50/50 blend (see Table III). This also applies to the other PP/LDPE blends with compositions 30/70 and 70/30. The crystallinity data α_{rX} derived for these blends are listed in Tables IV and V, respectively.

TABLE III
iPP/PE 50/50 Blends

Sample	T_{mPE} ($^\circ\text{C}$)	l_{cPE} (nm)	ΔH_{PE} (J/g)	α_{PE}	T_{mPP} ($^\circ\text{C}$)	l_{cPP} (nm)	ΔH_{PP} (J/g)	α_{PP}	α_{DSC} (total)	α_{rX}	H (MPa)	I.S. (kJ/m ²)
iPP/LDPE 50/50	108.8	6.8	50.3	0.17	157.7	15.6	49.7	0.24	0.41	0.44	33	4.42
IIA	112.3	7.6	79.6	0.27	158.8	16.3	36.7	0.18	0.45	0.43	39	7.32
IIB	111.9	7.5	72.2	0.25	159.0	16.4	36.2	0.17	0.42	0.45	37	6.67
IIC	112.4	7.6	74.8	0.25	159.6	16.7	35.7	0.17	0.43	0.46	40	–
IID	111.9	7.5	71.2	0.24	157.3	15.5	35.2	0.17	0.41	0.43	34	5.36
III	112.5	7.6	73.4	0.25	160.2	17.1	37.3	0.18	0.43	0.43	41	5.90
IIIF	111.5	7.4	82.6	0.28	158.2	15.9	37.3	0.18	0.46	0.42	34	7.19

Melting points T_{mPE} and T_{mPP} from DSC; crystal thickness values l_{cPE} and l_{cPP} derived from the melting points; melting enthalpies ΔH_{PE} and ΔH_{PP} ; crystallinity values α_{PE} , α_{PP} , and α_{DSC} (total) derived from DSC; crystallinity α_{rX} derived from WAXS, microhardness H , and impact strength I.S. Samples are as in Table II.

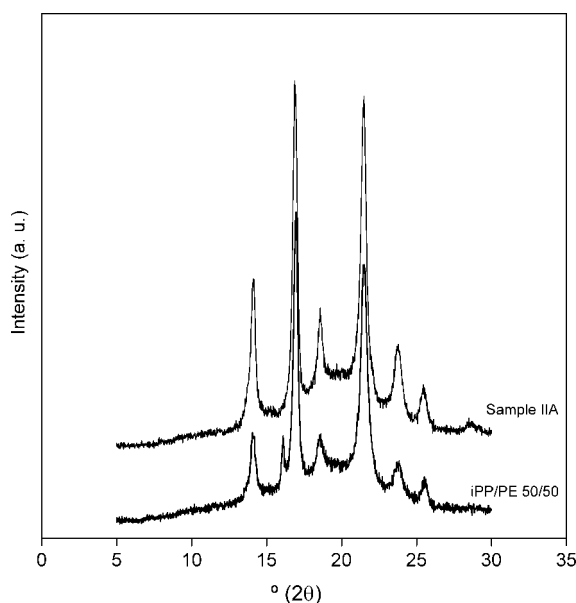


Figure 2 Diffractograms of blends iPP/LDPE 50/50: original, and crosslinked blend IIA. The composition is given in Table II.

Differential scanning calorimetry

The thermograms of the original and the crosslinked LDPE samples, not shown here, are identical. The crystallinity values α_{DSC} derived from them remain practically constant after the crosslinking process (0.38–0.40). The crystal thickness l_c , derived from the melting point T_m by using the Thomson–Gibbs equation, remains also constant ($l_c = 7.7$ – 8.1 nm).

Figure 3 shows the thermograms of the original iPP, and those of two crosslinked iPP samples (1 and 4). The composition is indicated in Table I. Here, one observes a new, low temperature melting peak (indicated by an arrow), appearing in the crosslinked iPP samples. The rest of crosslinked iPP samples show similar thermograms. The appearance of a low T_m peak, as pointed out in Ref. 11, may be due to the presence of PE chains, eventually originated by the reaction of, both, the peroxide and the potas-

sium persulfate on some of the tertiary carbon atoms of the iPP. Table III in Ref. 11 collects the melting temperatures T_m corresponding to the different peaks for each sample.

The thermodynamic crystal size l_c has been derived for each maximum by means of the well known Thomson–Gibbs equation:

$$T_m = T_m^0 [1 - (2\sigma_e / \Delta H_m^\infty l_c)] \quad (1)$$

where σ_e is the surface free energy and T_m^0 is the equilibrium melting point of each component. Table III in Ref. 11 lists, besides the l_c values, the melting enthalpies ΔH_m and the crystallinities α_{DSC} for, both, iPP and PE. We have used the following values for this calculation: (a) for the iPP component, we have taken $\Delta H_m^\infty = 207.33$ J/g,¹⁷ $T_m^0 = 460.7$ K,¹⁷ and $\sigma_e = 100$ erg/cm²;¹⁸ (b) for the PE component, we have used $\Delta H_m^\infty = 293.86$ J/g¹⁷ and $T_m^0 = 414.6$ K¹⁷; in addition, for the surface free energy σ_e of the PE, we have taken the value of 79 erg/cm².¹⁹ This value probably represents an upper limit. In fact, according to our results, σ_e on linear PE samples depends on the molecular weight. Thus, for the PE samples studied in Ref. 19, the surface free energy varies between 79 and 91 erg/cm². In addition, the melting temperature obtained in our work for the first maximum appearing in the thermograms of the crosslinked iPP samples is 117–118°C. This relatively low value suggests that the PE originated during the crosslinking process is not linear, but branched, and/or has a low molecular weight.

Figures 4 and 5 show the scans corresponding to the DSC study of the iPP and LDPE blends with compositions 50/50 and 70/30. For the sake of clarity, in both figures only the thermograms of the original blends and two crosslinked samples are shown. The specific compositions are shown in Table II. It is worth noting that, in the thermograms of the crosslinked blends, the melting peak of the LDPE is wider than in the nonmodified ones (Figs. 4 and 5). The 30/70 iPP/LDPE blends, not shown here,

TABLE IV
iPP/LDPE 30/70 Blends

Sample	$T_{m\text{PE}}$ (°C)	$l_{c\text{PE}}$ (nm)	ΔH_{PE} (J/g)	α_{PE}	$T_{m\text{PP}}$ (°C)	$l_{c\text{PP}}$ (nm)	ΔH_{PP} (J/g)	α_{PP}	α_{DSC} (total)	α_{rX}	H (MPa)	I.S. (kJ/m ²)
iPP/LDPE 30/70	109.5	6.9	72.0	0.24	160.6	17.3	21.0	0.10	0.35	0.39	30	3.45
VI1	112.8	7.7	89.4	0.30	159.1	16.4	20.9	0.10	0.40	0.40	29	24.04
VI2	112.9	7.8	98.1	0.33	159.3	16.5	23.2	0.11	0.45	0.41	30	19.09
VI3	112.7	7.7	94.9	0.32	159.2	16.5	23.1	0.11	0.43	0.41	30	15.36
VI4	114.1	7.7	100.9	0.34	159.8	16.8	23.7	0.11	0.46	0.39	28	11.86
VI5	112.2	7.6	102.2	0.35	160.7	17.4	26.7	0.13	0.48	0.37	32	34.12
VI6	112.4	7.6	103.6	0.35	158.8	16.2	24.1	0.11	0.47	0.40	29	31.81

Melting points $T_{m\text{PE}}$ and $T_{m\text{PP}}$ from DSC; crystal thickness values $l_{c\text{PE}}$ and $l_{c\text{PP}}$ derived from the melting points; melting enthalpies ΔH_{PE} and ΔH_{PP} ; crystallinity values α_{PE} , α_{PP} , and α_{DSC} (total) derived from DSC; crystallinity α_{rX} derived from WAXS, microhardness H and impact strength, I.S. Samples are as in Table II.

TABLE V
iPP/PE 70/30 Blends

Sample	T_{mPE} (°C)	l_{cPE} (nm)	ΔH_{PE} (J/g)	α_{PE}	T_{mPP} (°C)	l_{cPP} (nm)	ΔH_{PP} (J/g)	α_{PP}	α_{DSC} (total)	α_{rX}	H (MPa)	I.S. (kJ/m ²)
iPP/LDPE 70/30	109.2	6.9	40.1	0.14	158.7	16.2	61.4	0.30	0.43	0.43	45	2.58
IV1	111.4	7.4	73.6	0.25	158.6	16.2	54.1	0.26	0.51	0.44	49	5.91
IV2	111.2	7.3	56.4	0.19	161.0	17.6	59.9	0.29	0.48	0.45	51	6.09
IV3	110.8	7.2	63.0	0.21	159.7	16.8	53.9	0.26	0.47	0.44	53	4.28
IV4	111.1	7.3	58.0	0.20	159.2	16.5	55.2	0.27	0.46	0.44	52	5.74
IV5	111.3	7.3	65.6	0.22	159.4	16.6	49.2	0.24	0.46	0.49	44	5.60
IV6	110.7	7.2	57.4	0.20	159.5	16.6	57.0	0.27	0.47	0.47	59	7.03

Melting points T_{mPE} and T_{mPP} from DSC; crystal thickness values l_{cPE} and l_{cPP} derived from the melting points; melting enthalpies ΔH_{PE} and ΔH_{PP} ; crystallinity values α_{PE} , α_{PP} , and α_{DSC} (total) derived from DSC; crystallinity α_{rX} derived from WAXS, microhardness H , and impact strength I.S. Samples are as in Table II.

behave similarly. This means that the crystal thickness l_{cPE} distribution is more heterogeneous in the crosslinked materials. In addition, the l_{cPE} average value increases slightly (Tables III to V). On the other hand, the area of the LDPE melting peak notably increases in all the crosslinked samples, as compared with the nonmodified ones. For instance, in the nonmodified iPP/LDPE blends with compositions 30/70, 50/50, and 70/30, the ratio of the area calculated for the LDPE melting peak is 77.4, 49.7, and 39.5%, respectively. However, in the crosslinked iPP/LDPE blends, the area of the LDPE melting peak varies between 79 and 81% (series VI), 66 and 69% (series II), and 49 and 58% (series IV). Moreover, in the thermograms of all the crosslinked iPP/LDPE blends, together with the main melting peak of the LDPE at about 111–113°C, a shoulder appears at about 118–120°C (see Fig. 4, blends iPP/LDPE 50/50, and Fig. 5, blends iPP/LDPE 70/30). Neverthe-

less, the iPP melting peak in the crosslinked samples looks quite similar to the one in the nonmodified ones (Figs. 4 and 5).

The crystallinity α_{PE} derived from the DSC study increases in all the crosslinked blends, independently of the composition, in relation to the nonmodified ones (see Tables III to V). On the contrary, α_{PP} does not vary (blends iPP/LDPE 30/70, see Table IV), or shows only a small decrease (blends 50/50 and 70/30, see Tables III and V). Total crystallinities α_{rX} and α_{DSC} , derived from both methods, show quite similar values.

Mechanical properties

The crosslinking process does not seem to influence the microhardness, H , of the LDPE samples, being $H = 20$ – 21 MPa for all samples. However, cross-

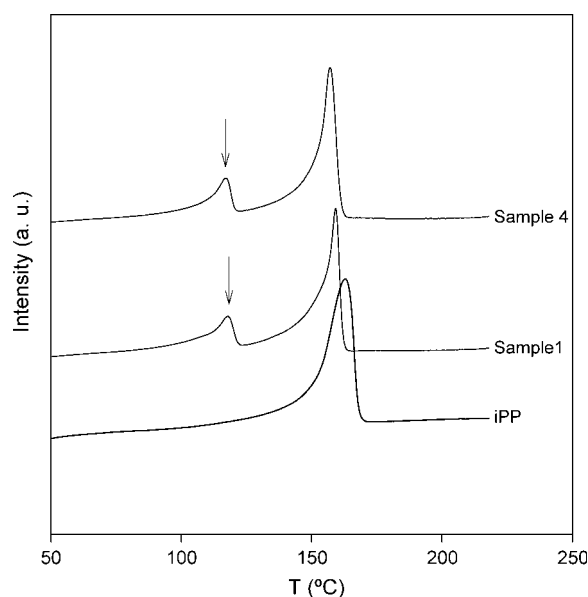


Figure 3 Thermograms of iPP: original, and crosslinked samples 1 and 4. See the composition in Table I.

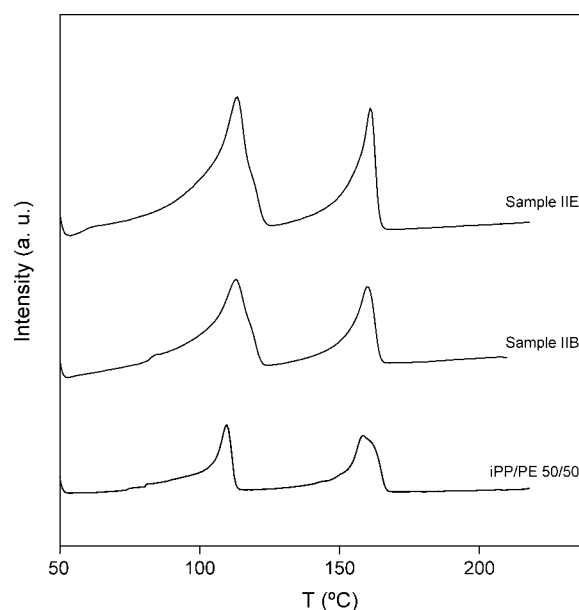


Figure 4 Thermograms of blends iPP/LDPE 50/50: original, and crosslinked blends IIB and IIE. The composition is shown in Table II.

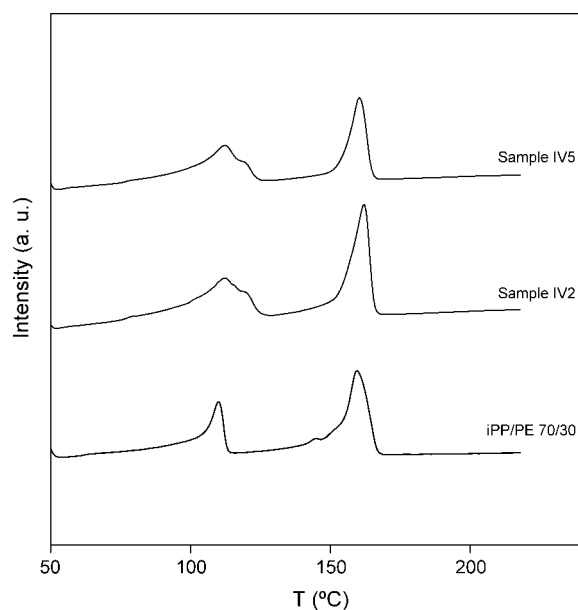


Figure 5 Thermograms of blends iPP/LDPE 70/30: original, and crosslinked blends IV2 and IV5. See the composition in Table II.

linked iPP samples show hardness values lower than the nonmodified material, except for sample 5, in which hardness slightly increases (see Table III in Ref. 11).

Tables III to V include the microhardness H values measured for all the blends studied. It can be seen that the crosslinked iPP/PE blends present H values that are identical (blends iPP/PE 30/70, Table IV) or even higher (blends iPP/LDPE 50/50 or 70/30, see Tables III and V) than those shown by the nonmodified material.

The microhardness of the blends as a function of iPP content is plotted in Figure 6. Here, the black symbols represent the data of the unmodified material, and the white ones, those of the crosslinked blends. As it was above told, most of the modified blends have higher H -values than their original counterparts. Two straight lines showing the additivity behavior of samples are drawn in Figure 6: the straight line 1 corresponds to the unmodified materials, and the straight line 2, to the crosslinked blends. Similarly, curve 3 indicates the real behavior of the original blends, and curve 4, that of the modified samples. From the plot, it is clear that neither the unmodified nor the crosslinked blends obey the additivity law¹⁴:

$$H_{\text{blend}} = H_{\text{PE}}\Phi + H_{\text{PP}}(1 - \Phi) \quad (2)$$

where Φ and $(1 - \Phi)$ are the weight fractions of LDPE and iPP, respectively.

On the other hand, the macroscopic mechanical properties obtained from the tensile stress-strain study are listed in Table VI. They include the elastic

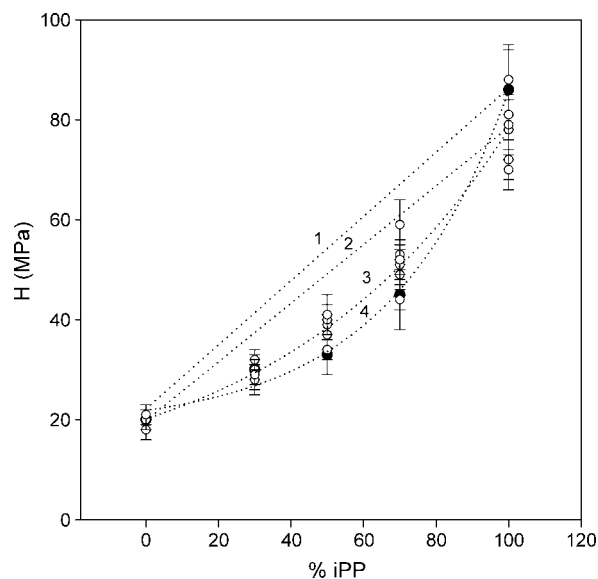


Figure 6 Dependence of the microhardness with the iPP content in the samples studied. Compositions are indicated in Tables I and II. Straight lines 1 and 2: additivity law in unmodified and crosslinked blends. Curves 3 and 5: lines fitted to the hardness behavior shown by the unmodified and crosslinked blends as a function of the iPP content.

modulus, and the stress, strain and energy at break for all the crosslinked blends.

The impact strength of the crosslinked LDPE samples, not shown here, is improved about 1.5–2.4 times as compared to that the original material (except in sample X4, compositions indicated in Table I). The same effect, but much stronger, is also

TABLE VI
Mechanical Properties of the Crosslinked Blends
(tensile stress-strain study)

Sample	Elastic modulus (MPa)	Stress at break (MPa)	Strain at break (%)	Energy at break (J)
VI1	355	16.55	10.3	5.1
VI2	375	17.2	8.8	4.4
VI3	332	12.9	13.5	7.0
VI4	458	17.6	13.2	7.6
VI5	390	17.5	15.9	9.8
VI6	490	18.0	14.8	9.2
IIA	603	22.3	9.5	6.2
IIB	690	22.5	12.5	10.5
IIC	614	21.0	7.9	4.8
IID	650	22.6	10.6	7.5
IIE	667	22.0	9.4	6.1
IIF	976	26.4	9.4	8.0
IV1	1050	27.0	8.3	6.8
IV2	966	56.6	10.7	9.3
IV3	845	25.4	10.1	8.4
IV4	3638	105.8	8.4	7.1
IV5	960	25.9	9.4	7.8
IV6	976	26.4	9.4	8.0

Samples are as in Table II.

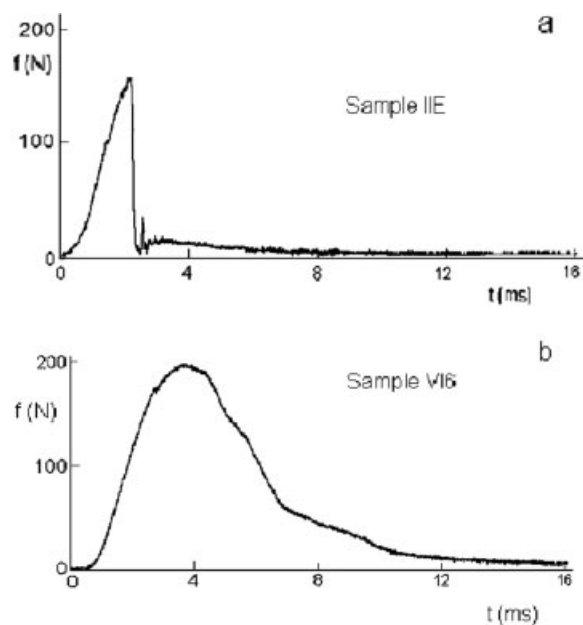


Figure 7 Plot showing the fracture behavior of: (a) iPP/LDPE 50/50 crosslinked blend IIE; (b) iPP/LDPE 30/70 crosslinked blend VI6 (See Table II).

observed for the crosslinked iPP/LDPE 30/70 blends. From Table IV, it can be deduced that the crosslinking process increases the impact strength of these samples until 10 times (see, for instance, sample VI5), as compared to the untreated material. However, in the iPP/LDPE 50/50 and 70/30 blends the crosslinking effect upon the impact strength is much smaller, crosslinked samples having impact strength values between 1.3 and 2.7 times higher than the nonmodified counterparts (see Table III and V). The type of fracture shown by the crosslinked blends is ductile in some cases, i.e., samples VI5 and VI6 (see Fig. 7b), but brittle in others, i.e., samples IV5, IV6, IIE (see Fig. 7a) and IIF (compositions are indicated in Table II). The crosslinked blends that present higher impact strength values are, at least in some cases, those showing a ductile fracture.

DISCUSSION

LDPE and iPP samples

The above WAXS and DSC results indicate that the melting point T_m , the crystallinity α (derived by both methods, DSC and WAXS), the crystal thickness l_c and the microhardness H values remain practically the same for all the LDPE samples before and after crosslinking. However, the impact strength of the crosslinked samples is improved (until 2.4 times in sample X1, compositions are indicated in Table I) as compared to that of the original material. The character of ductile fracture of the samples also increases in the crosslinked LDPE.

On the contrary, from Table III in Ref. 11, it is clear that the crosslinking affects the iPP samples, the crosslinked samples showing α and H values slightly lower than the nonmodified counterpart. Most interesting, however, is the fact that the crosslinking process gives rise to the appearance of a certain amount of PE. This is why, in the diffractograms of the crosslinked iPP samples (Fig. 1), a new reflection can be seen at 21° (2θ), which is related to the (200) planes of PE.¹⁵ The ethylenic chains are also responsible for the appearance of a low temperature peak, indicated by an arrow, in the thermograms of the crosslinked iPP (Fig. 3). The area of this new peak represents from 25 to 29% of the total area of each thermogram, depending on the sample.¹¹ FTIR studies performed on these samples,²⁰ but not shown here, confirm the presence of ethylenic chains in the crosslinked iPP. The two bands appearing at 720 and 730 cm^{-1} in the crosslinked iPP are attributed to the ethylenic chains created during the crosslinking process. These bands are characteristic of the rocking mode of the $(-\text{CH}_2-)_n$ sequences when $n \geq 4$.²¹ In addition, the ratio of the intensities between the bands at 2920 and 2950 cm^{-1} , attributed to the CH_2 and CH_3 antisymmetric stretching modes,²² respectively, increases in the all crosslinked iPP as compared to the original one.²⁰ Moreover, in the modified iPP a band appears at 2849 cm^{-1} , related to the CH_2 symmetric stretching mode,²² which is not visible in the pristine iPP.²⁰

The modified samples have impact strength values considerably higher than the original iPP, showing a ductile fracture instead of the brittle one characteristic of the nonmodified material (see Ref. 11).

iPP/LDPE blends

The crystallinity values (both α_x and α_{DSC}) of the iPP/LDPE blends remain practically identical to the values shown by the nonmodified materials (see Tables III to V). The Hardness H is slightly improved in the crosslinked blends, especially in those with iPP/LDPE 50/50 and 70/30 composition (See Tables III to V).

As we have shown in the preceding section, none of the blends included in this study obey the additivity law. It is well known that the hardness of a semicrystalline polymer can be expressed as: $H = H_c\alpha + H_a(1 - \alpha)$.¹⁴ Here, H_c and H_a are the hardness values of the crystalline and amorphous phase, respectively. On the other hand, the crystalline hardness H_c can be expressed as¹⁴:

$$H_c = H_0 / (1 + b/l_c) \quad (3)$$

In this equation, H_0 represents the hardness of an infinitely thick crystal, l_c the crystal thickness, and b

is a parameter relating the surface free energy, σ_e , of the crystals, and the energy necessary to deform the crystals plastically, being $b = \sigma_e/\Delta h$. As it can be seen from Tables III to V, after the crosslinking process, the crystal thickness l_c of, both, iPP and LDPE, remains practically the same as compared to the original LDPE and iPP material. Hence, the deviation of the hardness of the blends from the values predicted by the additivity law could be originated by an increase of the b -parameter, indicating that the surface free energy σ_e of the crystals increases in the blends; in other words, that the crystal surface in the blends is more disordered than in the homopolymers iPP and LDPE, as it has been shown to occur in PE/iPP gel blends.²³

The largest difference between the as-prepared and the crosslinked materials arise from their thermal behavior. As mentioned above, whereas in the crosslinked blends the iPP melting peak retains more or less its shape, as compared to the noncrosslinked ones, the LDPE peak seems to be more affected. Indeed its width increases, and also, it shows a shoulder at 118–120°C, together with the LDPE melting peak at 111–113°C. In addition, the area of the LDPE melting peak increases in all the crosslinked blends, as compared to the nonmodified ones. Probably, these effects are related to the crosslinking process of the iPP component, which, as it happens in case of crosslinked pure iPP samples, gives rise to the formation of a certain amount of PE that would add to the LDPE initially present in the blends. The generation of the ethylenic chains during the crosslinking process of the iPP has been already explained in some detail.¹¹ The oxy-radicals of the peroxide could eventually attack the tertiary carbons of the iPP, which, through the formation of a double bond, might react with the H atom of the methyl side groups. The process would finally give rise to the formation of branched ethylenic chains, which should be responsible for the melting peak visible at 117–118°C in the thermograms of the modified iPP.¹¹

In a similar way, in the crosslinked iPP/LDPE blends, the shoulder appearing on the high temperature side of the PE melting peak and the increase in the proportion of the area of the same melting peak are probably due to the newly created PE chains. These chains are thought to be responsible for the improvement of the impact strength in all the modified samples, this effect being much stronger in the PP/LDPE 30/70 blends. This improvement is accompanied by a ductile behavior in some of the sampled studied.

The mechanical properties of the crosslinked blends are listed in Table VI, including the values found for the elastic modulus E , and the stress, strain and energy at break for the three series.

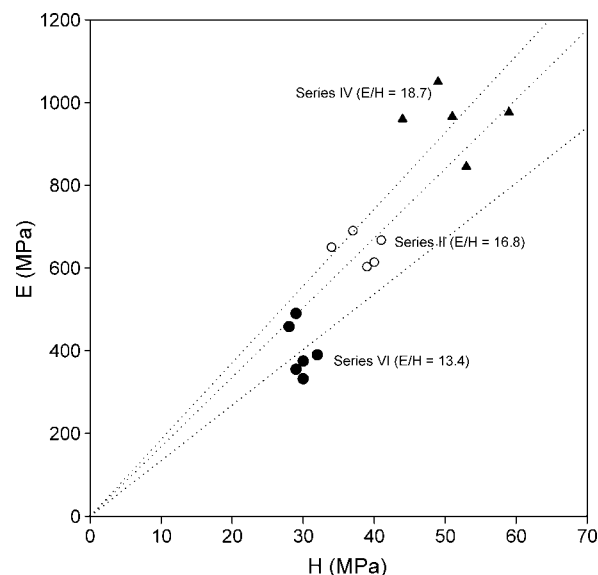


Figure 8 Relationship between the elastic modulus and the microhardness in the crosslinked blends. Compositions are indicated in Table II.

Figure 8 shows the plot of the elastic modulus, E (see Table VI), as a function of the microhardness H (see Tables III to V) for the crosslinked blends. One can derive the relation E/H for every series of crosslinked blends. Thus, for the blends with composition iPP/LDPE 30/70, is $E/H = 13$, a value close to that derived by Struik²⁴ and Flores et al.,²⁵ which found $E/H = 10$ for PE samples with different morphologies. However, in iPP/LDPE 50/50 and 70/30 blends, we find $E/H = 17$ – 19 . It appears that the relation between the elastic modulus and the microhardness increases with the proportion of the iPP in the blends.

Final remarks

In conclusion, the method initially developed to reversibly crosslink the iPP has been shown to be also applicable to iPP/LDPE blends having different composition by using a reactive extrusion method. The modified materials retain their level of crystallinity. However, their micromechanical characteristics slightly improve. The hardness of the blends increases with their iPP content. As a consequence of the crosslinking process, a certain amount of PE chains are formed at expenses of the iPP initially present in the blends, as it has been demonstrated from the DSC analysis. These PE chains are probably originated by a process similar to the one explained for the case of pure iPP samples, being responsible for the improved impact strength found in the crosslinked samples, and for the ductile behavior shown by some of them.

Thanks are due to the Drs. A. Bartolotta and G. Di Marco, from the "Istituto per i Processi Chimico-Fisici," Sez. Messina (CNR, Messina, Italy), who have performed the FTIR study.

References

1. Romani, F.; Corrieri, R.; Braga, V.; Ciardelli, F. *Polymer* 2002, 43, 115.
2. Khonakdar, H. A.; Morshedian, J.; Mehrabzadeh, M.; Wagenknecht, U.; Jafari, S. H. *Eur Polym J* 2002, 39, 1729.
3. Khonakdar, H. A.; Jafari, S. H.; Wagenknecht, U.; Jehnichen, D. *Radiat Phys Chem* 2006, 75, 78.
4. Khonakdar, H. A.; Jafari, S. H.; Taheri, M.; Wagenknecht, U.; Jehnichen, D.; Häussler, L. *J Appl Polym Sci* 2006, 100, 3264.
5. Busfield, W. K. *Eur Polym J* 1981, 17, 333.
6. Mercier, J. P.; Maréchal, E. *Chimie des Polymères (Traité des Matériaux, Vol. 13)*; Presses Polytechniques Romandes: Lausanne, 1996; Chapter 9, p 353.
7. Kubo, J.; Otsuhata, K.; Ikeda, S.; Seguchi, T. *J Appl Polym Sci* 1997, 64, 311.
8. Fritz, H.-G.; Stöhrer, B. *Int Polym Proc* 1986, 1, 31.
9. Berzin, F.; Vergnes, B.; Canevarolo, S. V.; Machado, A. V.; Covas, J. A. *J Appl Polym Sci* 2006, 99, 2082.
10. Berzin, F.; Vergnes, B.; Delamare, L. *J Appl Polym Sci* 2001, 80, 1243.
11. Bouhelal, S.; Cagiao, M. E.; Benachour, D.; Baltá Calleja, F. J. *J Appl Polym Sci* 2007, 103, 2968.
12. Bouhelal, S. U. S. Patent No. 6,987,149.
13. Bouhelal, S. U. S. Patent No. 7,241,844.
14. Baltá Calleja, F. J.; S.Fakirov. *Microhardness of Polymers (Solid State Science Series)*; Cambridge University Press: Cambridge, 2000; p 11.
15. Baltá Calleja, F. J.; Vonk, C. G. In *X-ray Scattering of Synthetic Polymers (Polymer Science Library 8)*; Jenkins, A. D., Ed. Elsevier: Amsterdam, 1989; Chapter 3, p 94.
16. Karger-Kocsis, J., Ed. *Polypropylene (Vol. 1: Structure, Blends and Composites)*; Chapman and Hall: London, 1995.
17. Wunderlich, B. *Macromolecular Physics (Vol. 3: Crystal Melting)*; Academic Press: New York, 1980; p 48.
18. Flores, A.; Aurrekoechea, J.; Gensler, R.; Kausch, H. H.; Baltá Calleja, F. J. *Colloid Polym Sci* 1998, 276, 786.
19. Baltá Calleja, F. J.; Santa Cruz, C.; Bayer, R. K.; Kilian, H. G. *Colloid Polym Sci* 1990, 268, 440.
20. A. Bartolotta; Di Marco, G. (unpublished results).
21. Bellamy, L. J. *The Infrared Spectra of Complex Molecules*. Methuen: London/Wiley: New York, 1964; Chapter 2, p 27.
22. Bellamy, L. J. *The Infrared Spectra of Complex Molecules*. Methuen: London/Wiley: New York, 1964; Chapter 2, p 14.
23. Baltá Calleja, F. J.; Santa Cruz, C.; Sawatari, C.; Asano, T. *Macromolecules* 1990, 23, 5352.
24. Struik, L. C. E. *J Non-Cryst Solids* 1991, 131, 395.
25. Flores, A.; Baltá Calleja, F. J.; Attenburrow, G. E.; Bassett, D. C. *Polymer* 2000, 41, 5431.